

STIEBEL ELTRON

The HOT 2.6 Under Sink Water Boiler

Efficient boiling water for kitchens, workplaces and more, from one tap

100YRS
OF INNOVATION



HOT 2.6

Under Sink Water Boiler

Experience the precision of German engineering



For over 100 years, STIEBEL ELTRON has been a global leader in water heating innovation. Proudly designed and engineered in Germany, we've been delivering reliable hot water solutions to homes and businesses around the world. We're excited to introduce our latest range of boiling water systems, brought directly from Europe to Australian homes and workplaces. Discover the perfect blend of performance, style, and efficiency.

- › Boiling water available for Coffee, Tea, Hot Drinks, Cooking and more
- › Compact and slim design
- › Four 3in1 tap colour options available
- › Programmable timer for energy savings
- › High-grade thermal insulation for low energy losses
- › HOT 2.6 standard in every package
- › 5 years of warranty
- › Easily swap your standalone boiling water tap with one of two mono tap alternatives

Design-Kollektion



Chrome



Matte Black



Brushed Gold



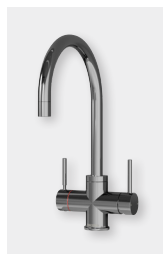
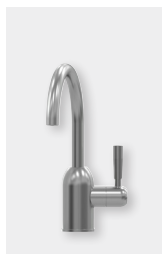
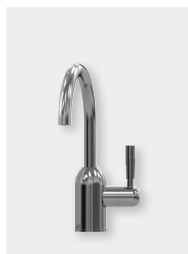
Brushed Nickel

The Design-Kollektion 3in1 tap connects like a standard mixer, with an extra line for instant boiling water from your HOT 2.6. Perfect for busy households, it speeds up cooking, replaces the kettle, and features a child-safe lever to ensure boiling water flows only when intentionally activated. Stylish, safe, and efficient.

- › Elegant design available in four colours
- › Hot, cold and boiling water from one tap
- › Easy installation with seamless integration
- › Eco-friendly operation, reducing energy consumption
- › Childproof push and turn safety mechanism
- › 220mm swivel spout for enhanced functionality
- › Lead free composition
- › Durable, high-quality finish
- › Versatile design to suit any kitchen interior
- › 5 years of warranty

Selection and Specification Guide

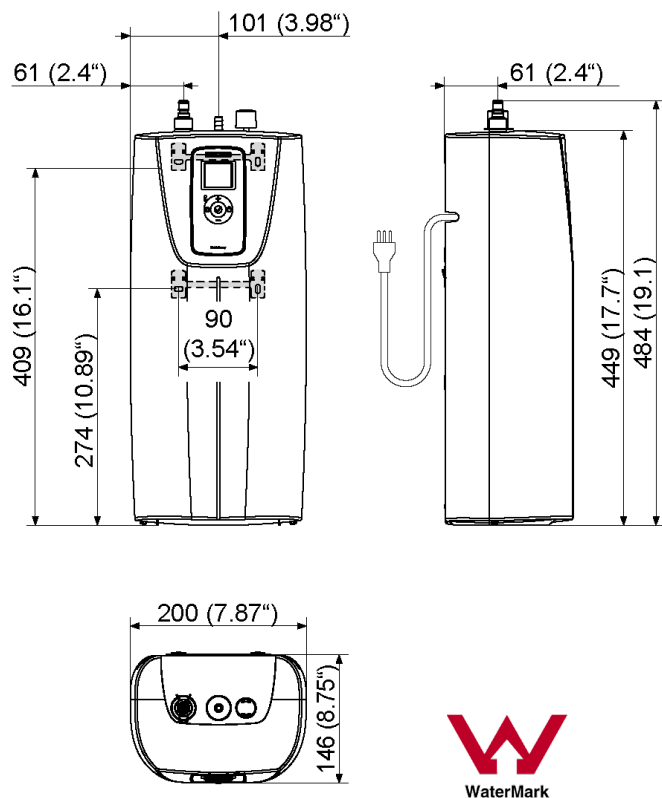
HOT 2.6 - A complete package, finished with your tap of choice



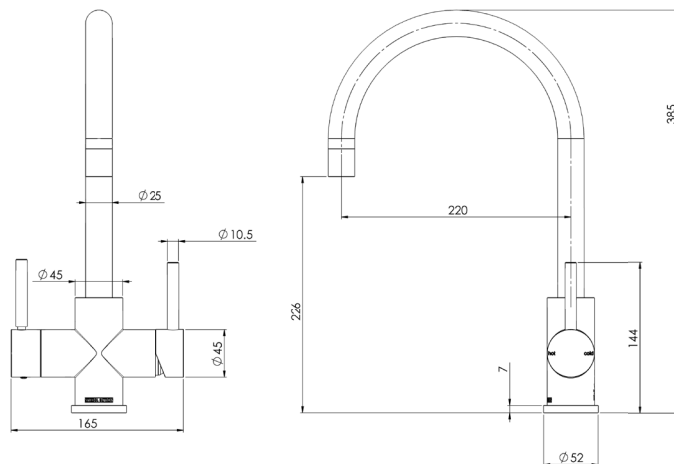
Specifications	Mono Tap	Mono Tap	3in1 Tap	3in1 Tap	3in1 Tap	3in1 Tap
HOT 2.6 + Tap Article Code	203880	203881	207997	207998	207999	208000
HOT 2.6 Appliance Type	Open vented	Open vented	Open vented	Open vented	Open vented	Open vented
HOT 2.6 Rated Capacity	2.6 L	2.6 L	2.6 L	2.6 L	2.6 L	2.6 L
HOT 2.6 Temperature Selection	Max. operating temperature 95 °C	Max. operating temperature 95 °C	Max. operating temperature 95 °C	Max. operating temperature 95 °C	Max. operating temperature 95 °C	Max. operating temperature 95 °C
HOT 2.6 Connection	1/N/PE - 230 V - 10 A	1/N/PE - 230 V - 10 A	1/N/PE - 230 V - 10 A	1/N/PE - 230 V - 10 A	1/N/PE - 230 V - 10 A	1/N/PE - 230 V - 10 A
HOT 2.6 Display and Operation	Multifunction display	Multifunction display	Multifunction display	Multifunction display	Multifunction display	Multifunction display
HOT 2.6 Number of Outlets	Single	Single	Single	Single	Single	Single
HOT 2.6 Plug in	■ / ■	■ / ■	■ / ■	■ / ■	■ / ■	■ / ■
HOT 2.6 Eco Mode	■	■	■	■	■	■
HOT 2.6 Warranty	5 years	5 years	5 years	5 years	5 years	5 years
HOT 2.6 Dimensions						
Width	200 mm	200 mm	200 mm	200 mm	200 mm	200 mm
Height	450 mm	450 mm	450 mm	450 mm	450 mm	450 mm
Depth	145 mm	145 mm	145 mm	145 mm	145 mm	145 mm
Tapware Colour	Chrome	Brushed Nickel	Chrome	Black	Gold	Brushed Nickel
Tapware WELS Rating	N/A	N/A	6 star	6 star	6 star	6 star
Tapware Flow Rate - Hot and Cold	N/A	N/A	4.5 L/min	4.5 L/min	4.5 L/min	4.5 L/min
Tapware Flow Rate - Boiling	2.5 L/min	2.5 L/min	2.5 L/min	2.5 L/min	2.5 L/min	2.5 L/min
Tapware Outlet Reach	148.5 mm	148.5 mm	220 mm	220 mm	220 mm	220 mm
Tapware Hole Diameter	38 mm	38 mm	35 mm	35 mm	35 mm	35 mm
Tapware Minimum Temperature	1°C	1°C	1°C	1°C	1°C	1°C
Tapware Maximum Temperature	95°C	95°C	95°C	95°C	95°C	95°C
Tapware Maximum Pressure cold water inlet	500 kPa	500 kPa	500 kPa	500 kPa	500 kPa	500 kPa
Tapware Warranty	5 years	5 years	5 years	5 years	5 years	5 years
Tapware Dimensions						
Width	91 mm	91 mm	165 mm	165 mm	165 mm	165 mm
Height	235 mm	235 mm	385 mm	385 mm	385 mm	385 mm
Depth	148.5 mm	148.5 mm	220 mm	220 mm	220 mm	220 mm

Installation and Brewing Guide

HOT 2.6 Dimensions



Design-Kollektion Tapware Dimensions



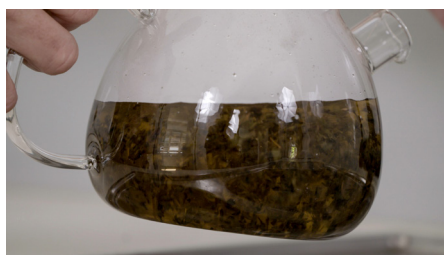
HOT 2.6 N Premium
Installation Guide



HOT 2.6 + 3in1 Tap
Installation Guide



The HOT 2.6 delivers boiling water at ideal temperatures for your favourite drinks. Watch our tutorial to see the perfect brew temps in action!



STIEBEL ELTRON is committed to our policy of continual improvement, some features may have subsequently been changed or even removed. Our advisors will be happy to consult with you regarding the currently applicable equipment features. The images used in this data sheet are for reference only.